

The Copeland Forest

Intrinsic Values

Intrinsic: a naturally occurring part of a whole

Value: may be monetary, spiritual or moralistic; level of importance may vary between observers



Ecologically, the Copeland Forest is dynamic,
always changing in a natural order.

Ecologically, the Copeland Forest is dynamic,
always changing in a natural order.



The Copeland Forest... 12,000 years ago.

The changes may be minute and take centuries to happen (e.g. *white birch has been in this region for only 5,000 years*), or could be aggressive and happen overnight (*Trout Pond washout: nature reclaiming the stream and ravine*).





Copeland Forest...
present era

The “values” of Copeland Forest:

1. Environmental services and ecological sustainability

The “values” of Copeland Forest:

1. Environmental services and ecological sustainability
2. Social opportunities and benefits

The “values” of Copeland Forest:

1. Environmental services and ecological sustainability
2. Social opportunities and benefits
3. Economic values

Environmental values:

Forests: carbon containment, oxygen production;
air cooling.



Environmental values:

Wetlands: store, filter and condition water for continuous release. Three river systems are 'born' within Copeland Forest.



Environmental values:

Flora and fauna:

- multiple habitats available for homes
- secluded areas for unique species (forest interior bird nesting)
- space for wide-ranging wildlife (fisher, otter, moose, deer, bear).







Natural botanical
gardens



Social values:

- a place to 'escape' to

Social values:

- a place to 'escape' to
- a place to meet like-minded people
(partnerships)

Social values:

- a place to 'escape' to
- a place to meet like-minded people
(partnerships)
- participate in activities that are part of
healthy lifestyle: fresh air and exercise

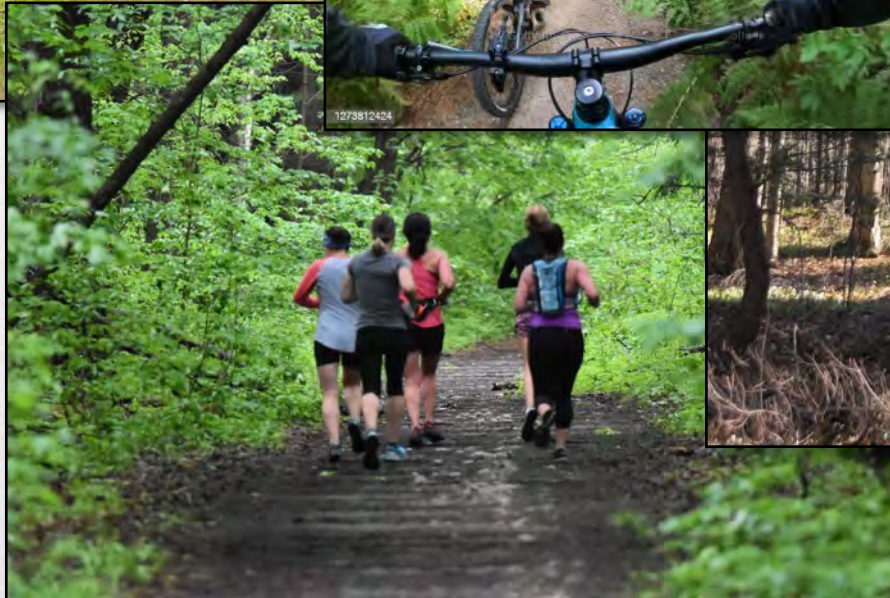
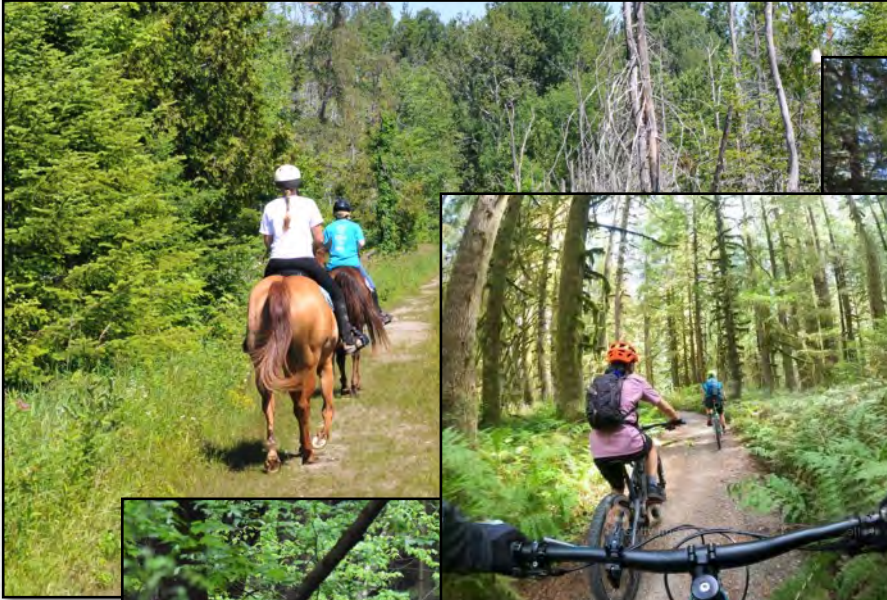
Social values:

- a place to 'escape' to
- a place to meet like-minded people (partnerships)
- participate in activities that are part of healthy lifestyle: fresh air and exercise
- aesthetic values: good for spirit, soul, mindfulness, forest bathing

Social values:

- a place to 'escape' to
- a place to meet like-minded people (partnerships)
- participate in activities that are part of healthy lifestyle: fresh air and exercise
- aesthetic values: good for spirit, soul, mindfulness, forest bathing
- history of use by humans (hunting /gathering; saw mill community; recreational)

Multi use





Remote settings for wildlife photography

Economic value:

- User fees / donations to support stewardship



Economic value:

- User fees / donations to support stewardship
- Tourism (sports and recreation, fall colour tours, seasonal events)



Economic value:

- User fees / donations to support stewardship
- Tourism (sports and recreation, fall colour tours, seasonal events)
- Forestry / timber



Economic value:

- User fees / donations to support stewardship
- Tourism (sports and recreation, fall colour tours, seasonal events)
- Forestry / timber
- SAR: impetus for grant funding



Economic value:

- User fees / donations to support stewardship
- Tourism (sports and recreation, fall colour tours, seasonal events)
- Forestry / timber
- SAR: impetus for grant funding
- Attracts nearby/adjacent real estate development (“right in your own backyard”)



The use of Copeland Forest is increasing. More people living in the area, greater encouragement to ‘get outdoors’, new activities being implemented.

The accumulative impact of our activities will have a negative affect on the natural ecology of the forest.



Therefore, if we truly value the natural attributes of Copeland Forest, we must find balance (sustainability) between what the forest provides and what we demand of it.

**We can not, should not, must not
“Love it to death”**

Challenges:

Limiting our negative impact: wildlife disruption, forest fragmentation, soil compaction.

Mitigating the impact of nearby residential density: sewage/effluent; surface runoff (ski hills and laneways); increased usage.

Climate change and accompanying tsunami of 'invasive species'. (garlic mustard, phragmites, ticks, EAB, yellow parsnip, etc.)



The Copeland Forest... my kind of place!

Presentation by
DAVID J. HAWKE

david.hawke55@gmail.com

07 May 2022
Friends of
Copeland Forest

